

Agilent AN 346-2

Balanced Circuit Measurement with an Impedance Analyzer/LCR Meter/Network Analyzer

Application Note

Introduction

How a balanced circuit differs from an unbalanced circuit

A balanced circuit has its electrical midpoint grounded. An unbalanced circuit, however, has one side grounded. A balanced circuit is typically used in communications equipment because a balanced circuit has the advantage of better spurious noise suppression.

Figure 1 shows a balanced cable which is an example of a balanced circuit. The voltages of the cable's two conductors are at every point equal in amplitude and opposite in phase. Figure 2 shows an unbalanced cable which is an example of an unbalanced circuit. Most measurement circuits in Agilent Technologies' impedance analyzers and LCR meters are unbalanced.

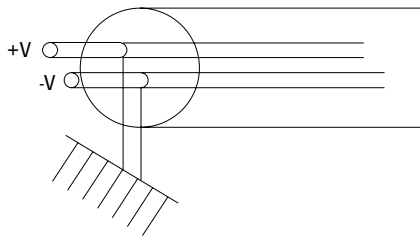


Figure 1. Balanced cable

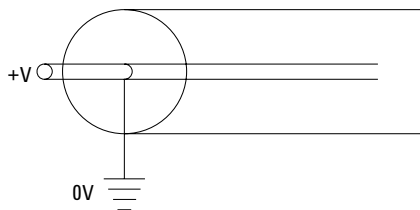


Figure 2. Unbalanced cable

Measuring a balanced circuit with an unbalanced measurement instrument

A balanced circuit cannot be directly measured with an unbalanced measurement instrument because of the difference in their configuration.

When measuring balanced circuits, the unbalanced measuring instrument requires a balun (balanced to unbalanced) transformer. A balun is a type of impedance-matching RF transformer.

Figure 3 shows the configuration for measuring a balanced circuit with an unbalanced instrument.

Note: In balanced cable measurements, residual current in the balun or the measuring instrument can cause measurement errors. To reduce the degree of error, perform open/short and load compensation at the measurement terminals of the balun.

Selecting a Balun

There are several types and brands of balun transformers. When selecting a balun, ensure that frequency is compatible with your measurement requirements. When you measure the impedance parameters of a balanced circuit, you don't have to use the balun which has the same impedance with the circuit under test. However, when you measure the transmission or reflection of it, you have to use a balun which has the same impedance with the circuit under test to keep impedance matching. Table 1 shows recommended balun transformers.

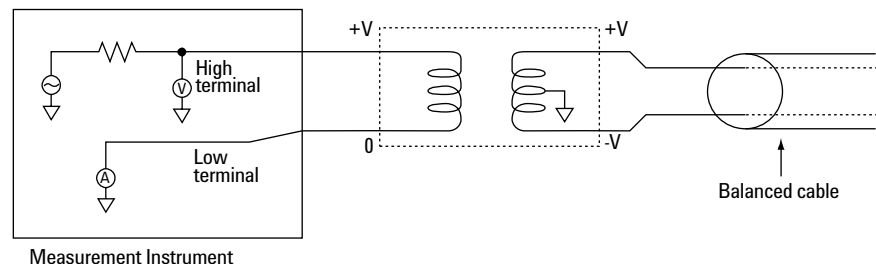


Figure 3. Balanced cable measurement configuration



Agilent Technologies

Measurement Configuration with a Balun and Compensation

Impedance measurement configuration with Agilent 4294A impedance analyzer

Figure 4 shows impedance measurement configuration (1)/(2) with the 4294A.

To calibrate/compensate for (1):

1. Perform open, short, and load compensation at the balanced terminals of the 16314A. Use the furnished compensation standards of the 16314A.

Standards 0 Ω PN 04191-85300
 0S PN 04191-85302
 50 Ω PN 04191-85301

To calibrate/compensate for (2):

1. Assemble a female BNC connector as shown in Figure 5.

2. Perform open, short, and load calibration at the BNC connector using the following BNC Calibration standards:

Short standard PN 1250-0929
 50 Ω load standard PN 11593A

3. Remove the connector and connect the DUT. Measure the DUT.

Impedance measurement configuration with the Agilent 4395A (#010)

Figure 6 shows impedance measurement configuration (2) with the 4395A.

To calibrate/compensate:

Refer to "To calibrate/compensate for (2)" of impedance measurement configuration with 4294A impedance analyzer.

Transmission measurement configuration with a network analyzer

Figure 7 shows transmission measurement configuration (3) with a network analyzer.

To calibrate/compensate:

Short the terminals closest to the DUT to the signal out and to the test port, then perform response/thru calibration.

Table 1. Recommended balun transformers

Unb/Bal. (W)	Bandwidth	Type No.	Suppliers
50:50	100 Hz to 10 MHz	16315A	Agilent Technologies
50:100	100 Hz to 10 MHz	16316A	Agilent Technologies
50:600	100 Hz to 3 MHz	16317A	Agilent Technologies
50:50	0.1–125 MHz	0001BB	North Hills Signal Processing
50:75	0.1–125 MHz	0101BB	North Hills Signal Processing
50:100	0.1–125 MHz	0300BB	North Hills Signal Processing
50:600	0.1–65 MHz	0700BB	North Hills Signal Processing
75:50	0.1–100 MHz	1000BB	North Hills Signal Processing
75:75	0.1–100 MHz	1100BB	North Hills Signal Processing
75:100	0.1–100 MHz	1300BB	North Hills Signal Processing
75:600	0.1–60 MHz	1700BB	North Hills Signal Processing

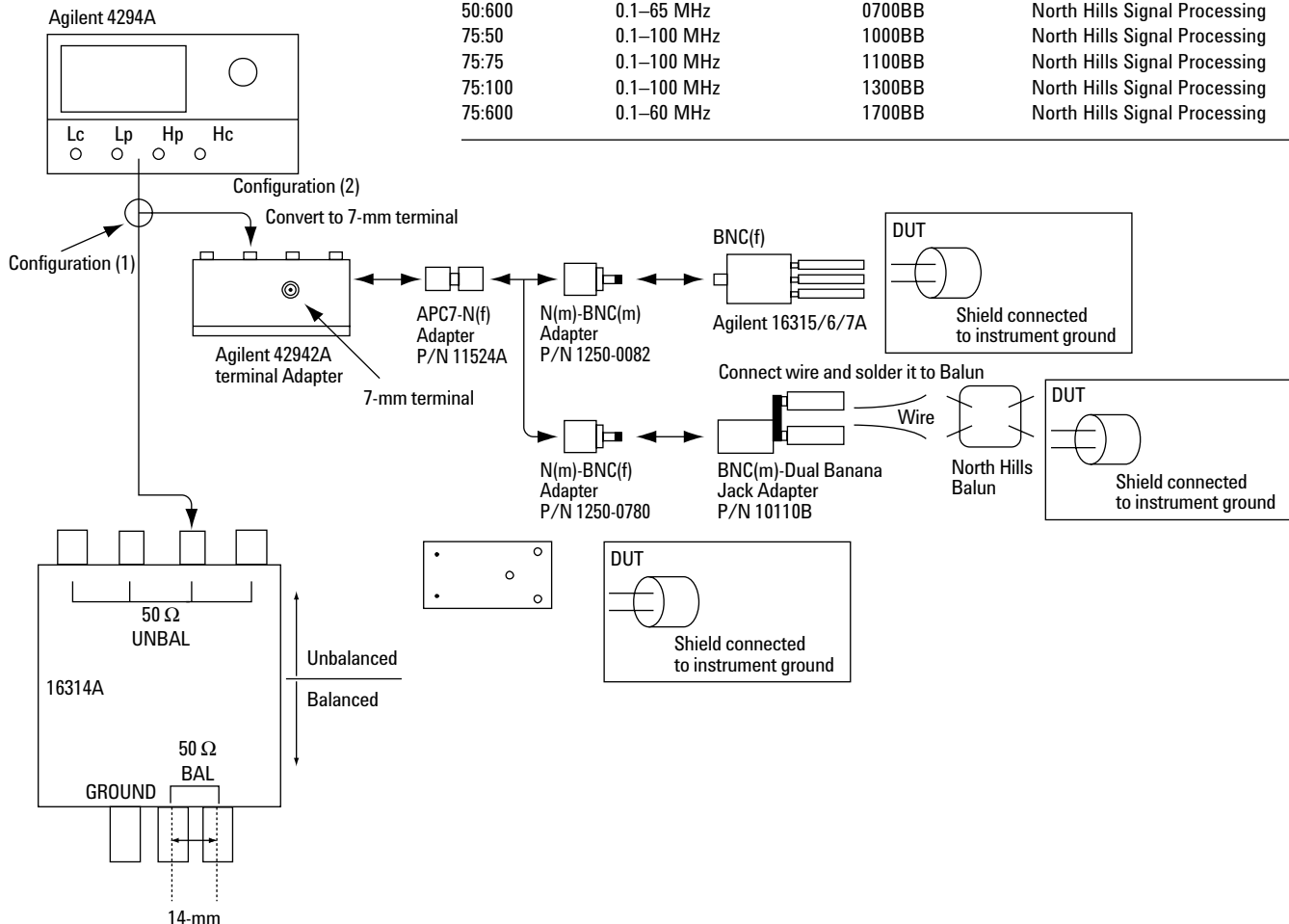


Figure 4. Measurement configurations with 4294A

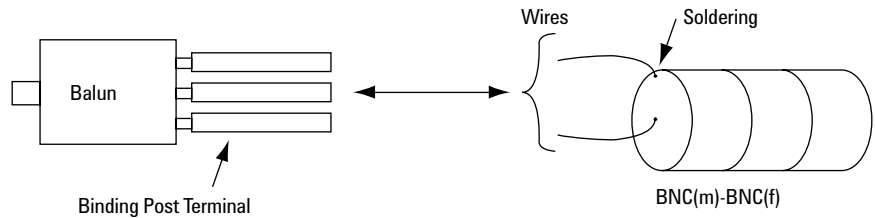


Figure 5. Assembling BNC connector

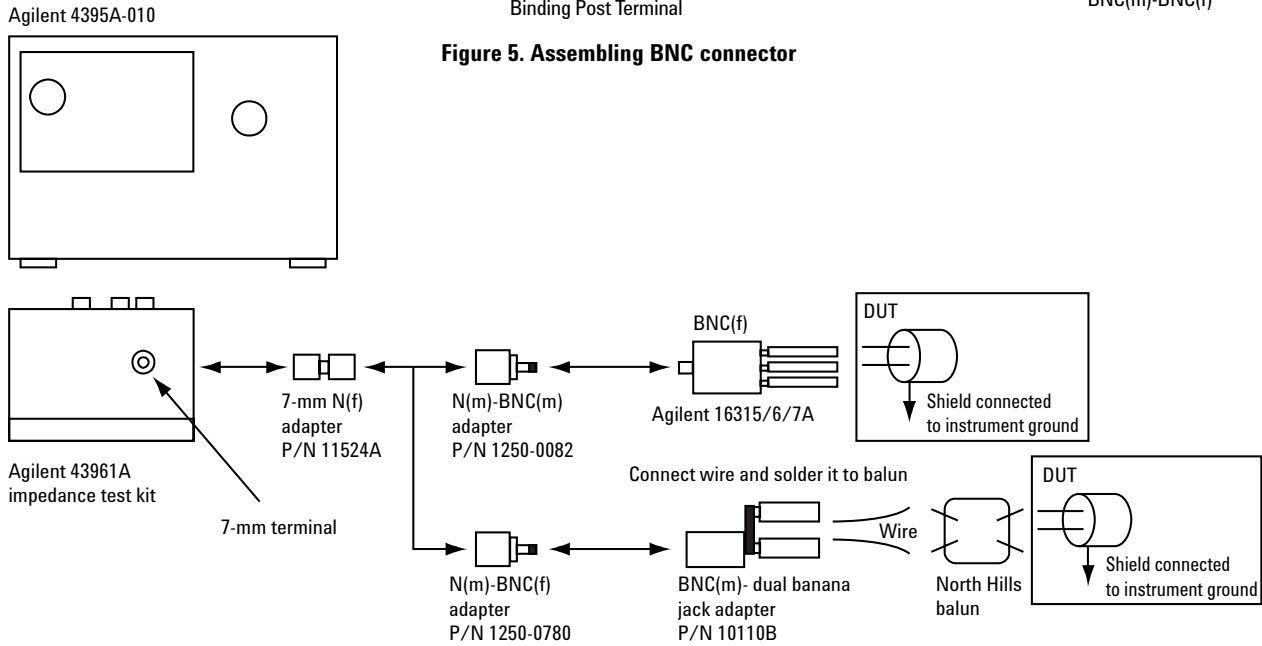


Figure 6. Measurement configuration (2)

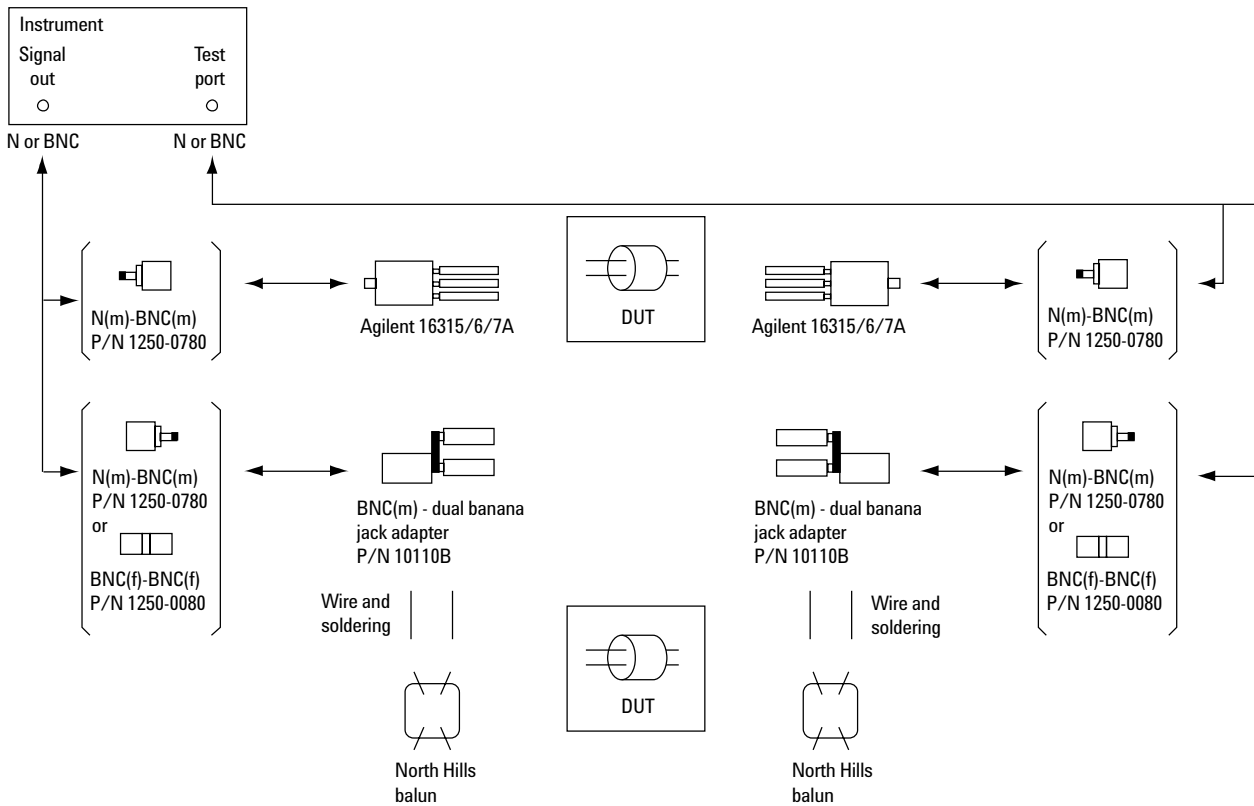


Figure 7. Measurement configuration (3)

Appendix: Agilent Balun Transformer Information

The Agilent balun transformers are excellent interfaces for measuring balanced components or circuits. They can be used with unbalanced system measurement instruments such as impedance analyzers, LCR meters, or and network analyzers (that are unbalanced system measurement instruments). Agilent offers the following balun transformers.

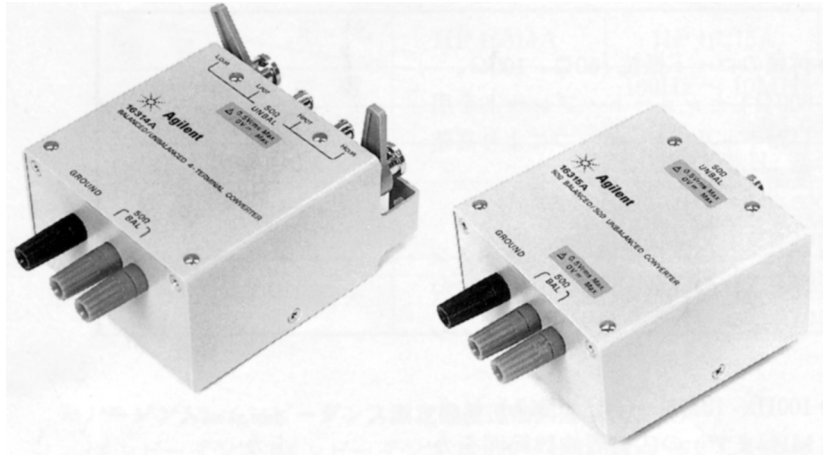


Figure 8. Agilent 16314A and 16315A

Agilent 16314A

The 16314A can be directly connected to a 4-terminal-pair impedance analyzer or an LCR meter. High-accuracy impedance measurements of balanced devices can be made by using the OPEN/SHORT/LOAD characteristic. This unique feature of the Agilent impedance analyzer and LCR meters is performed at the binding posts by using the furnished shorting plate and a 50 Ω load resistor.

- Wide frequency range (100 Hz to 10 MHz) is covered.
- Recommended instruments:
 - 4294A precision impedance analyzer
 - 4284A precision LCR meter
 - 4285A precision LCR meter

Agilent 16315A, 16316A, 16317A

- Reflection and transmission measurements of balanced devices and circuits can be measured made with a network analyzer.
- With the furnished load resistor (50 Ω , 100 Ω , 600 Ω) and short plate, calibration can be performed for high-accuracy measurements.
- Depending on the impedance of the device, balanced impedance of 50 Ω , 100 Ω , or 600 Ω can be selected.
- Wide frequency range (100 Hz to 10 MHz (Agilent 16317A covers up to 3 MHz))
- Recommended instruments:
 - 4395A 500 MHz network/spectrum/impedance analyzer
 - 4396B 1.8 GHz network/spectrum/impedance analyzer
 - 4294A precision impedance analyzer

Specifications

Specifications describe the instrument's warranted performance over the temperature range of 0 to 50 °C (except where noted) and after 30-minute warm-up time.

Table 2. Agilent balun transformers specifications

Item		16314A	16315A	16316A	16317A
Terminal configuration & nominal characteristic impedance	Balanced port	Binding posts 2 signal terminals and 1 ground terminal (signal terminal spacing: 14.0 mm)			
		50 Ω	50 Ω	100 Ω	600 Ω
	Unbalanced port	4 BNC connectors		1 BNC connector	
		50 Ω			
Size (mm)		89(W) x 56(H) x 133 (D)		89(W) x 55(H) x 121 (D)	
Weight (g)		400		350	
Operating temperature		0 to 55 °C			
Operating humidity		≤ 95% RH (@ 40 °C)			
Non-operation temperature		-40 to +70 °C			
Non-operating humidity		≤ 90% RH (@ 65 °C)			
Furnished accessories		50 Ω load resistor Shorting plate Manual	50 Ω load resistor Shorting plate Manual	100 Ω load resistor Shorting plate Manual	600 Ω load resistor Shorting plate Manual

Supplemental Characteristics

Supplemental characteristics are intended to provide information useful in applying the instrument by giving non-warranted performance parameters.

Table 3. Agilent Balun transformers supplemental characteristics (at 23 ± 5 °C)

Item	16314A	16315A	16316A	16317A
Operating frequency	100 Hz to 10 MHz			100 Hz to 3 MHz
Insertion loss	≤ 1.0 dB (@100 kHz)			
Freq. response	≤ 1.0 dB (relative to the insertion loss at 100 kHz)			≤ ±1.5 dB (relative to the insertion loss at 100 kHz)
Return loss	≥ 10 dB (100 Hz ≤ Freq. < 300 Hz) ≥ 20 dB (300 Hz ≤ Freq. < 7 MHz) ≥ 17 dB (7 MHz ≤ Freq. < 10 MHz)			≥ 10 dB (100 Hz ≤ Freq. < 300 MHz) ≥ 20 dB (300 MHz ≤ Freq. ≤ 1 MHz) ≥ 15 dB (1 MHz < Freq. ≤ 3MHz)
Common mode loss	≥ 50 dB (100 Hz ≤ Freq. < 3 MHz) ≥ 45 dB (3 MHz ≤ Freq. < 5 MHz) ≥ 40 dB (5 MHz ≤ Freq. < 10 MHz)			≥ 50 dB (100 Hz ≤ Freq. < 1 MHz) ≥ 45 dB (1 MHz ≤ Freq. < 3 MHz)

References

Impedance Measurement Handbook,
Publication Number 5950-3000

For information on balun, contact the manufacturers:

North Hills Signal Processing
A Porta Systems Company
575 Underhill Blvd.
Syosset, NY 11791
Tel: (516) 682 7740
Fax: (516) 682 7704

www.northhills-sp.com/contact.html



Agilent Email Updates

www.agilent.com/find/emailupdates

Get the latest information on the products and applications you select.

Agilent Technologies' Test and Measurement Support, Services, and Assistance

Agilent Technologies aims to maximize the value you receive, while minimizing your risk and problems. We strive to ensure that you get the test and measurement capabilities you paid for and obtain the support you need. Our extensive support resources and services can help you choose the right Agilent products for your applications and apply them successfully. Every instrument and system we sell has a global warranty. Support is available for at least five years beyond the production life of the product. Two concepts underlie Agilent's overall support policy: "Our Promise" and "Your Advantage."

Our Promise

Our Promise means your Agilent test and measurement equipment will meet its advertised performance and functionality. When you are choosing new equipment, we will help you with product information, including realistic performance specifications and practical recommendations from experienced test engineers. When you use Agilent equipment, we can verify that it works properly, help with product operation, and provide basic measurement assistance for the use of specified capabilities, at no extra cost upon request. Many self-help tools are available.

Your Advantage

Your Advantage means that Agilent offers a wide range of additional expert test and measurement services, which you can purchase according to your unique technical and business needs. Solve problems efficiently and gain a competitive edge by contracting with us for calibration, extra-cost upgrades, out-of-warranty repairs, and onsite education and training, as well as design, system integration, project management, and other professional engineering services. Experienced Agilent engineers and technicians worldwide can help you maximize your productivity, optimize the return on investment of your Agilent instruments and systems, and obtain dependable measurement accuracy for the life of those products.

Agilent T&M Software and Connectivity

Agilent's Test and Measurement software and connectivity products, solutions and developer network allows you to take time out of connecting your instruments to your computer with tools based on PC standards, so you can focus on your tasks, not on your connections. Visit www.agilent.com/find/connectivity for more information.

By internet, phone, or fax, get assistance with all your test & measurement needs

Online Assistance:
www.agilent.com/find/assist

Phone or Fax

United States:
(tel) 800 452 4844

Canada:
(tel) 877 894 4414
(fax) 905 282 6495

China:
(tel) 800 810 0189
(fax) 800 820 2816

Europe:
(tel) (31 20) 547 2323
(fax) (31 20) 547 2390

Japan:
(tel) (81) 426 56 7832
(fax) (81) 426 56 7840

Korea:

(tel) (82 2) 2004 5004
(fax) (82 2) 2004 5115

Latin America:

(tel) (305) 269 7500
(fax) (305) 269 7599

Taiwan:

(tel) 0800 047 866
(fax) 0800 286 331

Other Asia Pacific

Countries:

(tel) (65) 6375 8100
(fax) (65) 6836 0252

Email:
tm_asia@agilent.com

Product specifications and descriptions in this document subject to change without notice.

© Agilent Technologies, Inc. 1998, 2000, 2003
Printed in USA, September 30, 2003
5091-4480E



Agilent Technologies